



BINKS FOREST ELEMENTARY SCHOOL

561-904-9800

15101 BENT CREEK ROAD

WELLINGTON, FL 33414

# Owl Blast Newsletter

February  
2023

Volume 10  
Issue 5

[www.binksforestpta.org](http://www.binksforestpta.org)

## MARK YOUR CALENDARS

### FEBRUARY DATES

**3 POPCORN FRIDAY  
(VOLUNTEER OPPORTUNITY)**

**3 COLLEGE SHIRT FRIDAY**

**10 FUN RUN  
(VOLUNTEER OPPORTUNITY)**

**14 TRADE-A-BOOK TUESDAY  
(VOLUNTEER OPPORTUNITY)**

**17 JUMP ROPE FOR HEART**

**20 PDD  
(PROFESSIONAL DEVELOPMENT FOR  
TEACHERS)—NO SCHOOL FOR  
STUDENTS**

**28 INDIVIDUAL SPRING PICTURE DAY**

### BOOSTERTHON

A promotional poster for the Boostertthon. It features a young girl with a wolf logo on her shirt. The text on the poster includes "BOOSTERTHON" at the top, "HELP OUR SCHOOL" in large letters, "2/11/23 KICKOFF DATE", "2/10/23 EVENT DATE", "MYBOOSTER.COM" in a red banner, and a QR code with the instruction "Scan with your phone".

*The Boostertthon Fun Run will get students active and moving while helping their school! During the Fun Run, students will run, skip, walk, dance, and MORE during 30-35 themed laps. During this unforgettable, school-wide experience, all students will be challenged to stay moving and on the track for a total of 30-35 laps.*

# Winter Equestrian Festival 2023

January 4–April 2



**OUR WEEK**  
at  
Wellington International

**BINKS FOREST  
ELEMENTARY SCHOOL**  
Saturday, February 25, 2023  
Gates Open at 6:00 P.M.

**FREE GENERAL ADMISSION  
& PARKING**

13500 South Shore Boulevard  
Wellington, FL



## BINKS FOREST NIGHT! FEBRUARY 25TH

*It's everyone's favorite night at the Palm Beach International Equestrian Center! Join us for Saturday Night Lights at WEF 2023.*

*The event not only showcases the largest equestrian show jumping competition of the week taking place in the International Arena, but families can also spend time in the FREE kids fair, which features a petting zoo, pony rides, genuine Venetian Carousel, face painters, street performers, food trucks, unique shopping experiences, and lots more!*

## Support Binks Forest PTA

Amazon Smile Ends on February 20, 2023!

**amazon**smile  
You shop. Amazon gives.



Thursday,  
February  
23rd

### Dollar\$ For No Collar\$

&

### Spirit Night





# SCHOOL HAPPENINGS

## LITERACY WEEK!

*Mrs. Epstein wants to thank our wonderful families & community for a great Literacy Week! Thank you for your continued support with your student's literacy.*



## STEAM NIGHT

*Thank you to all the families that came out for STEAM Night! It was a huge success!*



*A big THANK YOU to the Teachers and Volunteers for running all the fun activities!!*

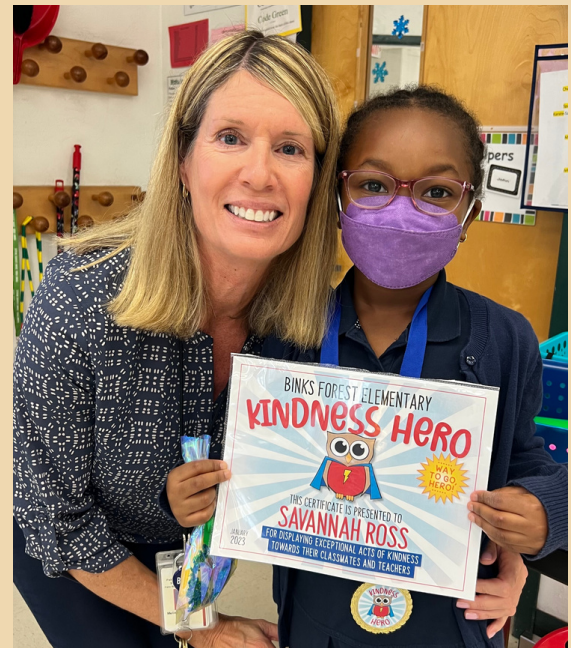


# PTA ADVOCACY



## JANUARY'S KINDNESS HERO

*PTA Advocacy is very proud to announce our January Binks Kindness Hero, Savannah, from Ms. Cheatham's first-grade class!*



*Savannah has been nominated by Mrs. Olsen, who explains: "Savannah comes to my classroom every morning and helps my kindergarten students log into their iReady programs. She is very kind and patient and she's always helping her fellow students." Savannah and her class celebrated with a party! They enjoyed delicious cookies from Christy's Bakery and Savannah received a Kindness Hero medal and certificate. We are so proud of you Savannah!*

## SPREADING KINDNESS



**ATTENTION BINKS FAMILIES! A NEW WAY TO PROMOTE KINDNESS IN OUR SCHOOL AND COMMUNITY IS THROUGH PARTICIPATING IN THE "KIND OWLS CLUB".**

PTA Advocacy is encouraging our students to perform acts of kindness! Each month we will have a very specific kindness focus. Students will have the chance to win a prize if they complete the challenge.

- **FEBRUARY'S KINDNESS FOCUS:** Let's have an attitude of gratitude!
- **FEBRUARY'S CHALLENGE:** Do something helpful for your teacher or tell them "thank you" for helping you by doing an act of kindness for them. Examples of being helpful and thankful are: helping to clean up from a project, passing out papers, writing a thank you card.
- **HOW TO PARTICIPATE:** Students can write down the "act of kindness" they completed on any piece of paper and give to their teacher. Teachers can email [advocacy@binksforestpta.com](mailto:advocacy@binksforestpta.com) or put a note in our Advocacy folder in the mail room with the student's name, homeroom teacher and kind act.
- **PRIZES:** All entries will be placed in a jar once a month. One entry will be selected the last week of the month. **DUE DATE FOR ENTRIES: 25th of each month.** A prize filled with kindness goodies will be given to the winner.
- **QUESTIONS:** Email Dara & Melissa at [advocacy@binksforestpta.com](mailto:advocacy@binksforestpta.com)



## Help Binks Forest Elementary SPREAD LOVE & KINDNESS

to  
Friends of Foster Children Palm Beach County

IN HONOR OF RANDOM ACTS OF KINDNESS DAY, WE ARE COLLECTING ITEMS TO CREATE SPECIAL VALENTINE BAGS FOR OUR LOCAL FOSTER CHILDREN. PLEASE CONSIDER DONATING:

- Small stuffed animals (beanie baby size)
- Small toys (to fit in an 8x10 size bag)
- Hand sanitizer (size small)
- Body spray and lotion (size small)
- Individual candy packs

**January 27-February 8**

Collection Box in Main Office

Questions? Email: [advocacy@binksforestpta.com](mailto:advocacy@binksforestpta.com)

# COUNSELORS' CORNER

Dr. Randi Schietz  
School Counselor  
(561) 904-9811

randi.schietz@palmbeachschools.org  
Twitter- @RSchietz

Kelly Giegerich  
Behavioral Health Professional  
(561) 904-9838

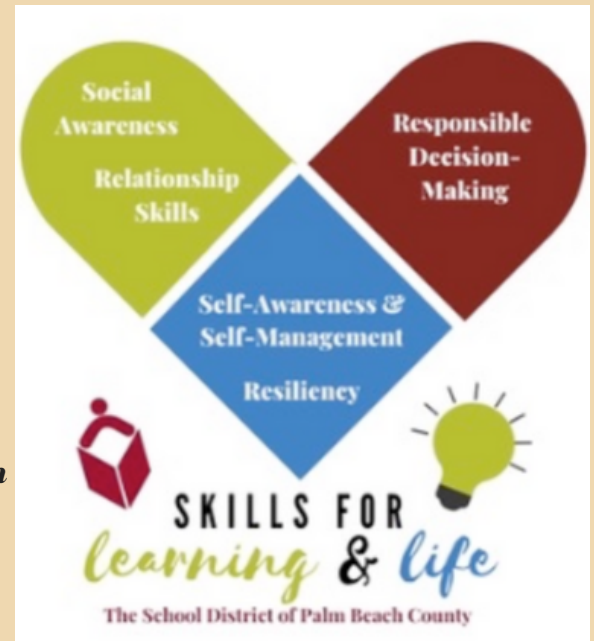
Kelly.giegerich@palmbeachschools.org

## FEBRUARY IS NATIONAL SCHOOL COUNSELING MONTH!

### S.E.L. IS NOW S.L.L.

*The School District has aligned the curriculum with the mandated state requirements and has since changed the Department name to “Skills for Learning and Life”. All schools in the county are adopting the new name and so the S.E.L. (Social-Emotional Learning) Class is now going to be known as “S.L.L.”. As a school counselor, my lessons follow the American School Counselor Mindsets and Behavior Standards and standards cover social-emotional, career, and academic development and also align with the*

*district S.L.L. and Resiliency Competencies (The S.L.L. competencies are shown in the new logo graphic). The school district is also now following the “Character Now” program for Character Education, which includes the following character traits: Respect, Responsibility, Generosity/Charity, Honesty/Trustworthiness, Kindness/Empathy, Tolerance, and Cooperation/Citizenship. These traits and competencies are taught through S.L.L. Class, classroom morning meetings, our Proud Owl student recognition, and through our daily morning announcements. If you want to view the district lessons and SLL Guide you can access it below.*



### CAREER WEEK (FEB 6-9) AND VEHICLE DAY (FEB 17)



*We are excited for our annual event and might still be looking for some speakers. Please contact me if you are interested in speaking or participating in Vehicle Day. We always have a few slots to fill or last-minute cancellations. I will share highlights in the next newsletter.*

# We Need Volunteers

Visit our website or click the  
button below for  
volunteer opportunities!

